

# FOOT WARMING SYSTEM

**SIDAS**  
*Your foot company™*



INSTRUCTIONS OF USE

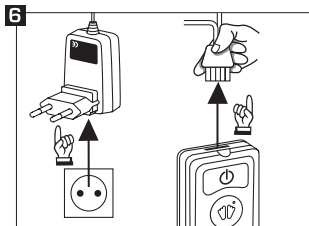
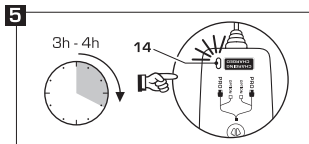
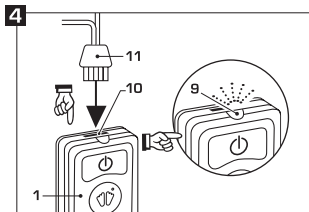
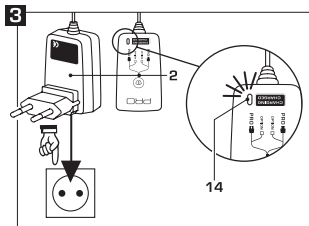
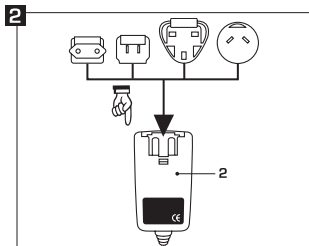
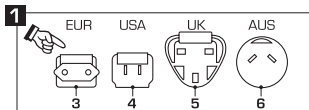


[www.sidas.com](http://www.sidas.com)

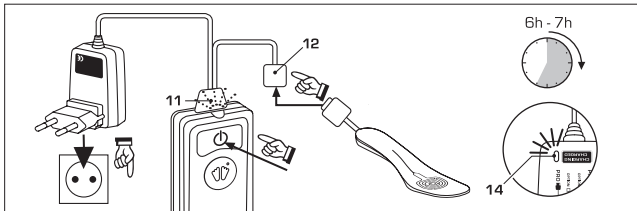
PRO

**BATTERY PACK**  
FOR SIDAS HEATING INSOLES

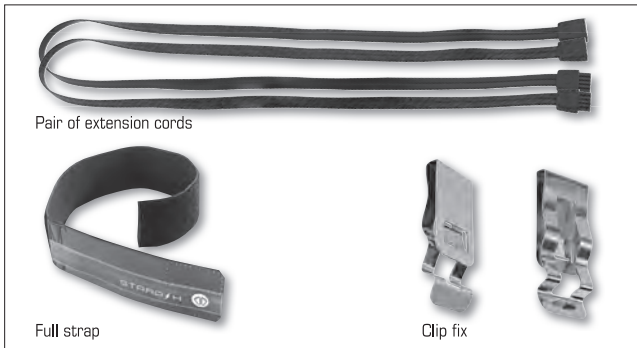
# BATTERY RECHARGING PROCESS

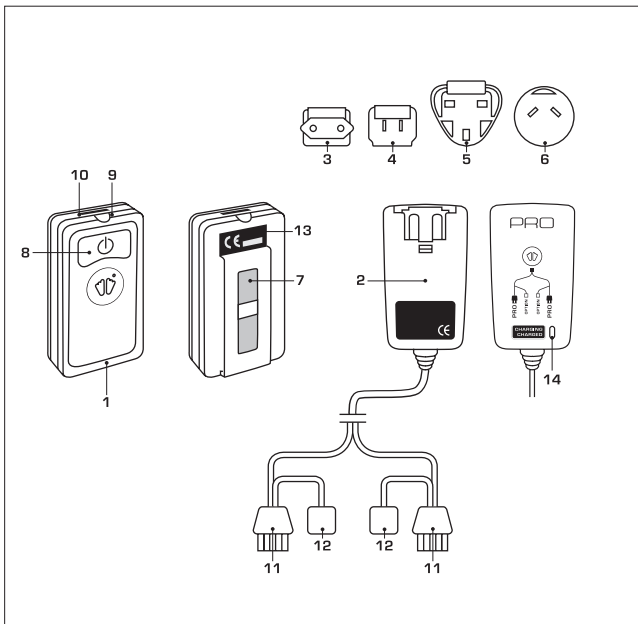


## DRYING OPTION PROCESS



## ACCESSORY OPTION





## CONTENTS

PRO batteries (EN)	p.4-7
PRO Batterien (DE)	p.8-11
Batteries PRO (FR)	p.12-15
Batterie PRO (IT)	p.16-19
Baterías PRO (ES)	p.20-23
PRO batterijen (NL)	p.24-27
PRO batterier (DA)	p.28-31
PRO-batterier (NO)	p.32-35
PRO-batterier (SV)	p.36-39
PRO-akut (FI)	p.40-43
Baterije PRO (SL)	p.44-47
PRO akkumulátor (HU)	p.48-51
Akumulatorki PRO (PL)	p.52-55
Baterie Sidas PRO (CS)	p.56-59
Μπαταρίες PRO (EL)	p.60-63
PRO piller (TR)	p.64-67
Батарей PRO (PY)	p.68-71
PRO 電池 (ZH)	p.72-75
プロ・バッテリー (JA)	p.76-79
PRO 배터리 (KO)	p.80-83

Congratulations on your purchase of the PRO Sidas battery pack.  
Please read these instructions carefully before starting the equipment.  
For a detailed manual log on to [www.sidas.com](http://www.sidas.com).

**NB: PRO Sidas batteries operate only with Sidas heating insoles, and the accessories of the Sidas product range.**

### **Description of the PRO pack**

- |   |  |
|---|--|
| <b>1-</b> PRO battery x 2 units.  | <b>7-</b> Fastening clip x 2 units.                  |
| <b>2-</b> Charger x 1 unit.<br><i>Input: 400 mA / 100-240 V / 50-60 Hz.</i><br><i>Output: 1 A max. / 8.4 V.</i> | <b>8-</b> ON/OFF button and mode selection.          |
| <b>3-</b> EUR connector x 1 unit.   | <b>9-</b> Mode indicator lamp.                       |
| <b>4-</b> USA connector x 1 unit.   | <b>10-</b> Connector for heating insoles or charger. |
| <b>5-</b> UK connector x 1 unit.  | <b>11-</b> Connector for recharging PRO batteries.   |
| <b>6-</b> AUS connector (optional).   | <b>12-</b> Connector for the other options.          |
|   | <b>13-</b> Rating plate with serial number.          |
|   | <b>14-</b> Charger status indicator.                 |

### **Safety instructions**

- Person(s) who cannot feel the effects of heated insoles may cause injury to themselves by using this product.
- Excessive use at high settings can cause severe burns.
- This equipment should only be used by children under the guidance of an adult.
- To prevent moisture from entering the battery case, ensure the insoles are connected at all times.
- Do not attempt to use the battery pack if any part (case / charger / connector / etc.) becomes damaged. Contact your nearest dealer for assistance.
- All repairs must be performed by the company SIDAS or their authorized agents.
- Battery packs may explode if exposed to excessive heat.
- Never try to open a battery unit. You risk an explosion in the event of incorrect handling of the lithium-ion batteries! You also risk damaging the battery electronics.
- The batteries should not be left within reach of children, thrown into the fire or dismantled.
- In the event of ingestion, contact a doctor immediately.
- In the event of battery acid contact with eyes, skin or clothing, rinse thoroughly with water and contact a doctor immediately.
- Always remove used batteries from the device and dispose of them, because the battery acid could damage the NANO batteries if released.

## Start-up

Before any use, make sure that the PRO batteries are fully charged. To charge the PRO batteries, follow the instructions in the "Battery recharging" section below.

## Attaching PRO batteries

If your boot has a strap of maximum width 55 mm: Attach the PRO batteries using the metallic clip onto the boot strap.

If your boot is not fitted with a strap:

- Attach your batteries safely with the Sidas Velcro strap (accessory not supplied).
- Use your batteries for any outdoor activity, placed in a pocket (of the trousers or jacket, for example) using the Sidas extension cable (accessory not supplied).
- Attach your battery to your belt or any other holder with the metallic battery clip, the Sidas clipfix (accessory not supplied).

You can see the accessories on the [www.sidas.com](http://www.sidas.com) site or at your specialist dealer.

**Important note:** Do not attach the PRO batteries to smooth or slippery areas to avoid losing them!

## Battery recharging

- 1- Select the charger connector appropriate for the mains supply of your installation: Connector 3, 4, 5 or 6.
  - 2- Connect this connector to the charger.
  - 3- Connect the charger to the mains supply: indicator lamp 14 lights green.
  - 4- Connect the charger connectors 11 to the connectors 10 of the PRO batteries. Indicator lamp 9 flashes. 14 becomes red.
  - 5- At the end of charging, indicator lamp 14 on the charger lights green.
  - 6- Disconnect the charger from the mains, then disconnect the batteries from the charger.
- Charging time: 3-4h without drying option.*

## Drying options

During the charging cycle, you can connect a drying option (Sidas insole, or accessory) to the charger (connectors 12).

The power supply for this option is provided during battery charging, in AC. Indicator lamp 14 on the charger remains red.

*Charging time: 6-7h with drying option.* The light 14 will stay red in this configuration, and the pack will be loaded at 95% of its capacity.

## NB

- PRO batteries should be recharged exclusively with the charger supplied in this pack.
- Recharging should be performed indoors in a dry place.
- PRO batteries should be recharged after each use and before each storage.
- You can switch off the PRO batteries during charging without affecting this function. However, the optional functions (drying) will be suspended.

## Using PRO batteries

Each PRO battery has 3 heating modes:

<u>Mode</u>	<u>Status of lamp 9</u>	<u>Battery life</u>
1	Green	up to 8h
2	Orange	up to 6h
3	Red	up to 4h

## Operating mode

- *To switch on your PRO battery:* Press for 3 s on button 8: indicator lamp 9 flashes and then lights green. Mode 1 is active.
- *To change mode, from any mode:* Press for 1 s on button 8: indicator lamp 9 changes colour depending on the mode.
- *To switch off your PRO battery from any mode:* Press for more than 3 s on button 8: indicator lamp 9 flashes and then goes out when you release it.

The heating period per charge is between 4h and 8h depending on the heating mode selected, the ambient temperature, the charge level and the age of the storage batteries.

If you find that the heating period decreases, it may be necessary to replace the PRO batteries. Contact your specialist dealer or our after sales service department.

## Storage

To extend the service life of PRO batteries as long as possible, we recommend that you store them in a dry, cool place (from 5°C/41°F to 20°C/68°F), after having charged them half full. The PRO batteries should be stored after being switched off (indicator lamp 9 extinguished) and disconnected from the Sidas heating insoles and the charger.

In the event of prolonged storage, the batteries should be discharged at least every six months, then recharged half full (about 1h). In this way, the storage batteries keep their maximum properties for several years.



If necessary, clean the parts with a slightly moist soft cloth and a mild cleaning agent.  
NB: Before each cleaning operation, disconnect the charger from the connector.

### **Scrapping**

When the device has reached the end of its life cycle, scrap it with its packaging in compliance with environmental protection rules.

Do not throw the charger and the PRO batteries into the household refuse or into the fire, but deposit them at an electronic waste collection point.

The packaging materials are recyclable raw materials. Send them to a recycling centre.

For more details, consult the local authorities for refuse removal or look for a website on battery recycling, on which you will find a list of the sites provided for the purpose near where you are.

### **Guarantee**

This product is guaranteed against any manufacturing or operating defect, for one year from the date of purchase.

The guarantee is valid only upon presentation of the sales slip and the original packaging, with all the original parts.

The guarantee does not cover any defects due to incorrect handling or use of the equipment.

The company SIDAS declines any responsibility for any consequential damage.

A 1-year extension of the guarantee is offered by Sidas upon registration on the website [www.sidas.com](http://www.sidas.com).

The battery serial numbers are shown on the rating plate 13.

For more information, consult the [www.sidas.com](http://www.sidas.com) website and your specialist dealer.

Subject to change. This product is in conformance with applicable laws and directives.